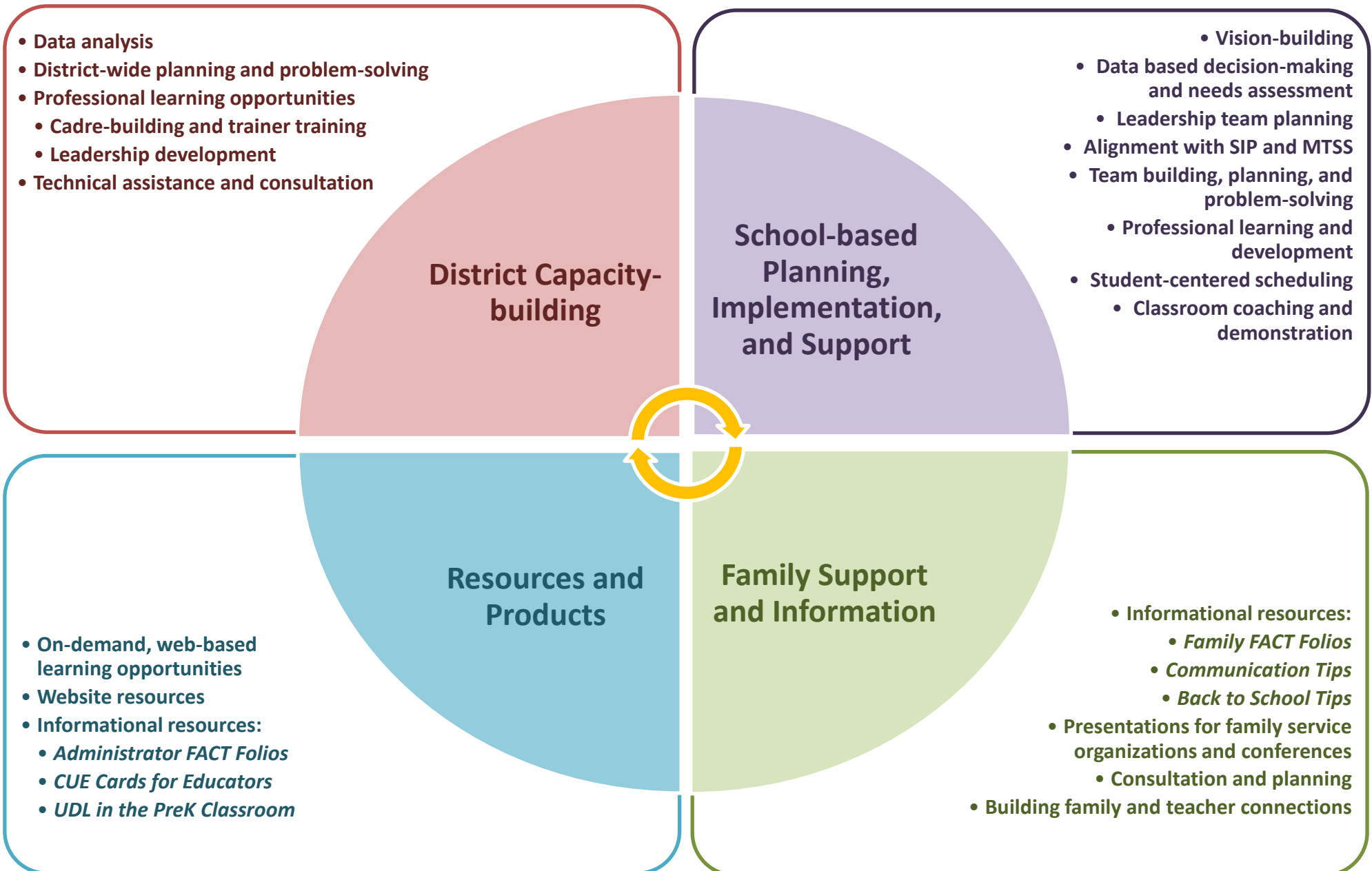


# The Florida Inclusion Network Services and Resources

*The Florida Inclusion Network (FIN) collaborates with all districts and schools to provide customized services and supports ensuring all students with disabilities have the same educational, social, and future opportunities as their peers.*



# *Data-based Professional Learning:*

## **Supporting Learning and Achievement for Students with Disabilities in General Education**

### ***District Capacity-building***

- Building Inclusive Schools: E-Learning Modules
- Flexible Scheduling for In-class Support Trainer Training
- Collaborative Teaching Trainer Training
- Peer Support Program Development
- From Label to Able Leadership Webinars
- Best Practices for Inclusive Education Needs Assessment Process
- Sustaining Staff Capabilities:
  - District staff PLCs
  - Coaching and Mentoring
  - Consultation

### ***School-based Planning, Implementation, and Support***

- Building Inclusive Schools: E-Learning Modules
- Flexible Scheduling for In-class Support
- Collaborative Teaching—Online and face-to-face
- Differentiated Instruction—Online and face-to-face
- Formative Assessment—Online and face-to-face
- Content Enhancement Routines
- Instructional Strategies That Work (R. Marzano)
- Curriculum Accommodations and Modifications
- Peer Support Program Development
- From Label to Able Leadership Webinars and Team Planning (for students with significant disabilities)
- Best Practices for Inclusive Education (BPIE) Needs Assessment
- Sustaining Staff Capabilities—Online and face-to-face:
  - Team PLCs and Study Groups
  - Coaching and Classroom Demonstration
  - Problem-solving and Consultation

### ***Resources and Products***

- FACT Folios—Administrators and families
- CUE Cards—Instructional strategies for teachers
- What is Inclusion—Informational pamphlet
- Disability-related Videos and Awareness Information
- Apps for Inclusive Education
- ***And much more!***

***Check out our website to see all of the resources  
FIN has to offer:***

**[www.FloridaInclusionNetwork.com](http://www.FloridaInclusionNetwork.com)**

### ***Family Support and Information***

- Building Inclusive Schools: E-Learning Modules
- Family FACT Folios and Training
- Communication Tips for Families
- First Fridays with FIN—Online and phone-based family collaboration
- Families and Teachers Working Together Workshop
- Consultation and Resources